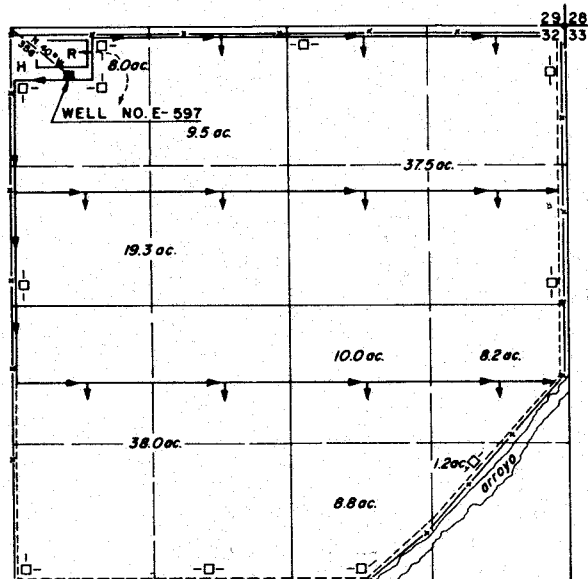
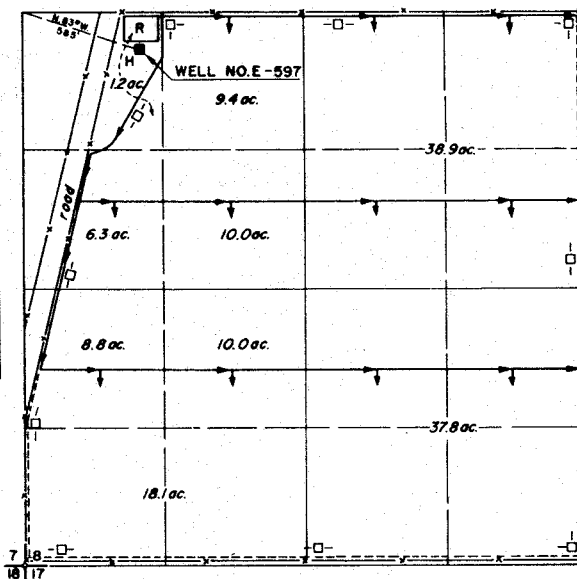


5.9. SAMPLE PLAT--WATER RIGHT FILING MAP

PLAT OF UNDERGROUND WATER PROJECT TO ACCOMPANY LAND SURVEYOR'S REPORT ON PERMIT TO CHANGE LOCATION OF WELL AND PLACE OF USE IN ESTANCIA UNDERGROUND WATER BASIN PERMIT NO. E-597, JOHN W. SMITH, PERMITTEE.



AREA MOVED FROM



AREA MOVED TO

AREA MOVED FROM:

SUBDIVISION	SEC.	TWP.	RGE.	ACRES
NW 1/4 NW 1/4 NE 1/4	32	8N	9E	8.0
NE 1/4 NW 1/4 NE 1/4	32	8N	9E	9.5
S 1/2 NW 1/4 NE 1/4	32	8N	9E	19.3
NE 1/4 NE 1/4	32	8N	9E	37.5
SW 1/4 NE 1/4	32	8N	9E	38.0
NW 1/4 SE 1/4 NE 1/4	32	8N	9E	10.0
NE 1/4 SE 1/4 NE 1/4	32	8N	9E	8.2
SW 1/4 SE 1/4 NE 1/4	32	8N	9E	8.8
SE 1/4 SE 1/4 NE 1/4	32	8N	9E	1.2
TOTAL				140.5

AREA MOVED TO:

SUBDIVISION	SEC.	TWP.	RGE.	ACRES
NW 1/4 NW 1/4 SW 1/4	8	7N	9E	1.2
NE 1/4 NW 1/4 SW 1/4	8	7N	9E	9.4
SW 1/4 NW 1/4 SW 1/4	8	7N	9E	6.3
SE 1/4 NW 1/4 SW 1/4	8	7N	9E	10.0
NE 1/4 SW 1/4	8	7N	9E	38.9
NW 1/4 SW 1/4 SW 1/4	8	7N	9E	8.8
NE 1/4 SW 1/4 SW 1/4	8	7N	9E	10.0
S 1/2 SW 1/4 SW 1/4	8	7N	9E	18.1
SE 1/4 SW 1/4	8	7N	9E	37.8
TOTAL				140.5

I, HENRY DOE, HEREBY CERTIFY THAT I AM THE REGISTERED LAND SURVEYOR WHO PREPARED THE ABOVE MAP AND STATEMENT FROM FIELD NOTES OF ACTUAL SURVEYS CONDUCTED ON NOVEMBER 20, 1955 BY ME OR UNDER MY DIRECTION, AND THAT THE SAME ARE TRUE AND CORRECT TO THE BEST OF MY KNOWLEDGE AND BELIEF

*Henry Doe*  
REGISTERED LAND SURVEYOR

LICENSE NO. 4425  
DECEMBER 10, 1955



FILE NO. E-597

TWP \_\_\_\_\_ RGE \_\_\_\_\_ SEC \_\_\_\_\_

SCALE: 1 INCH = 400 FEET

The water right is controlled by natural or artificial boundaries which limit cropping practice and include all water-using areas created by irrigation structures and works adjoining the cropped area. Storage reservoirs where isolated from the cropped area shall be shown as part of the water right.